

# THE HOWARD COUNTY BICYCLE MASTER PLAN

## BIKE HOWARD



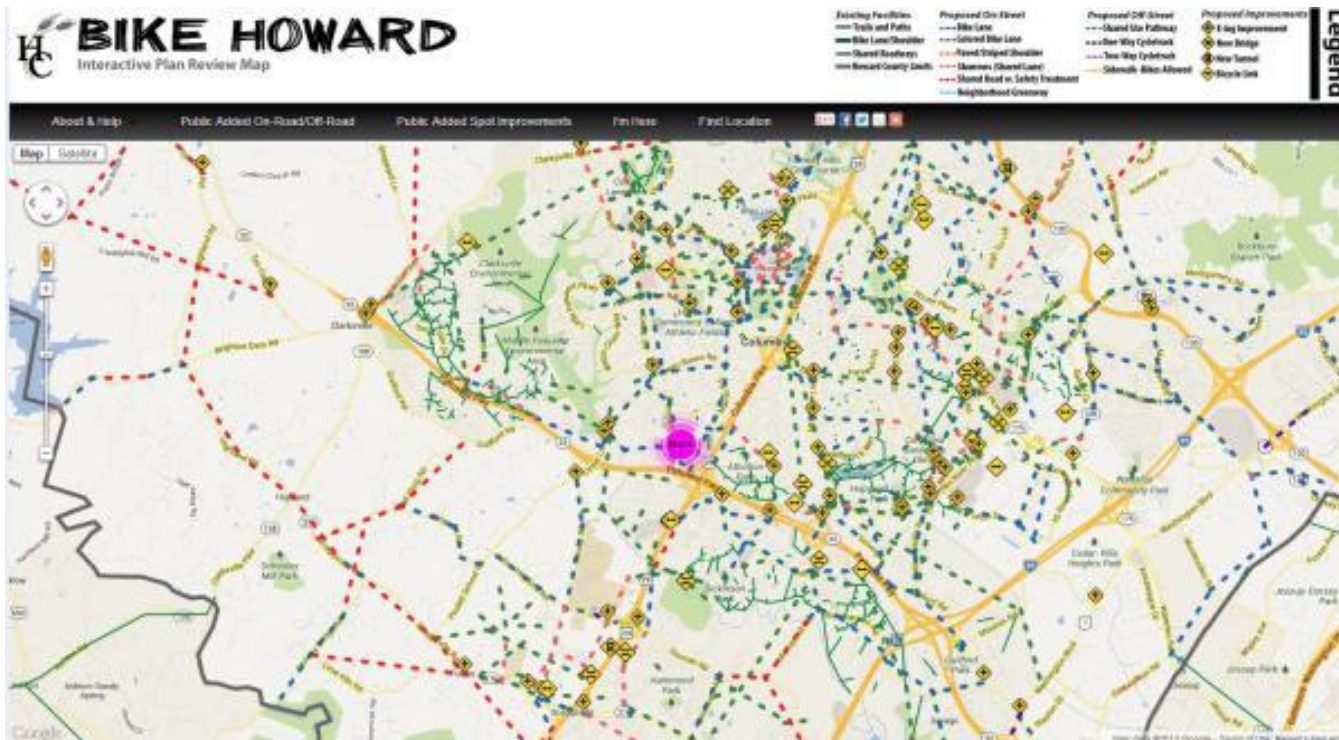
### VISION:

***“Howard County, Maryland seeks to be a bicycle-friendly County where residents and visitors, schoolchildren and seniors, men and women feel comfortable and safe bicycling on our roads and paths as a means of daily transportation and healthy recreation”.***

- Infrastructure
- Policy
- Programs (education, encouragement, enforcement)

# BIKE MASTER PLAN STATUS

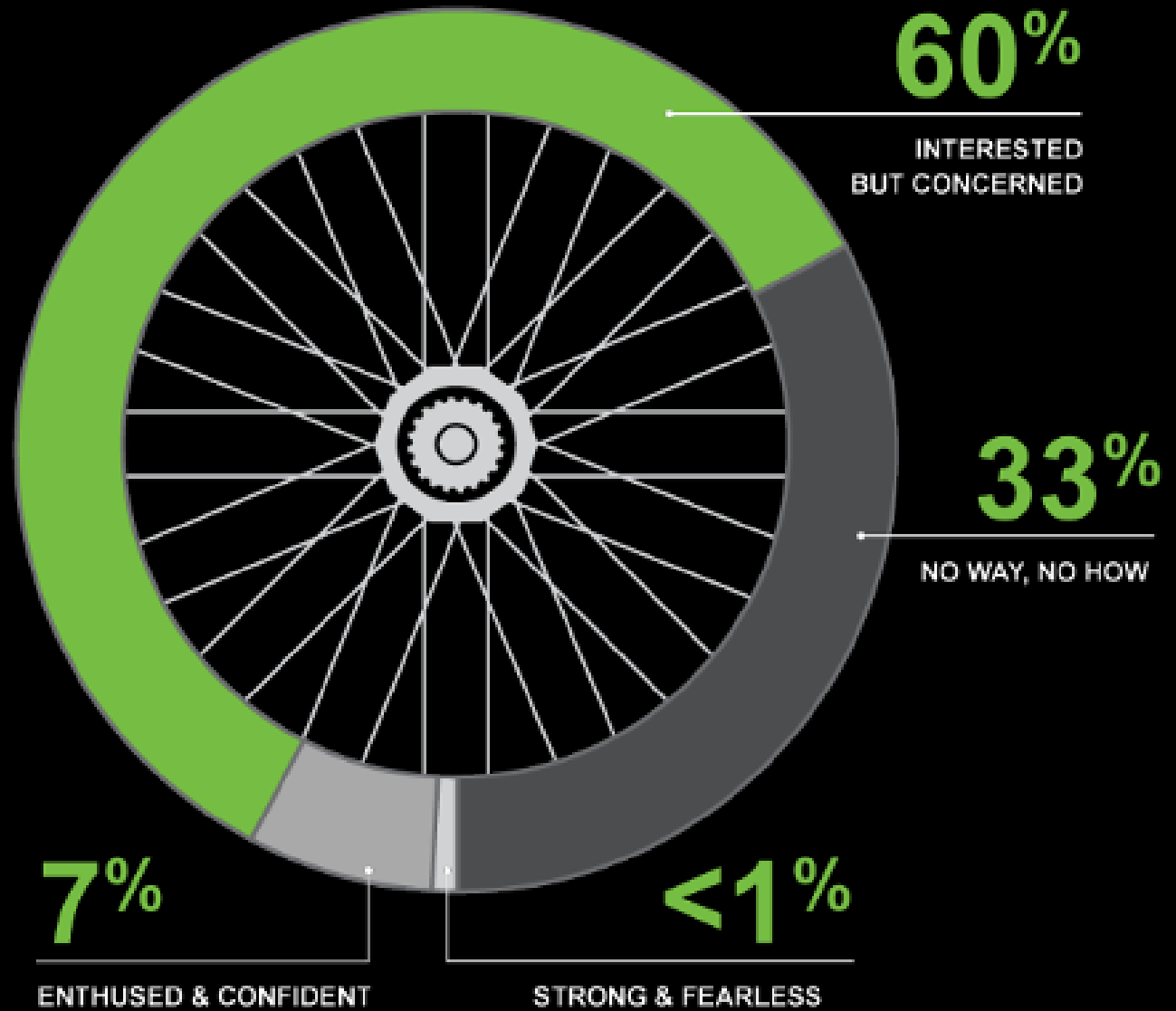
- Plan drafted and posted in 2014
- Available at [www.BikeHoward.com](http://www.BikeHoward.com)
- Capital budget provided through K5066



# PLAN, DESIGN AND BUILD FOR THE RIDERS YOU WANT TO HAVE



# FOUR TYPES OF RIDERS



# INFRASTRUCTURE FOR ALL AGES AND ABILITIES



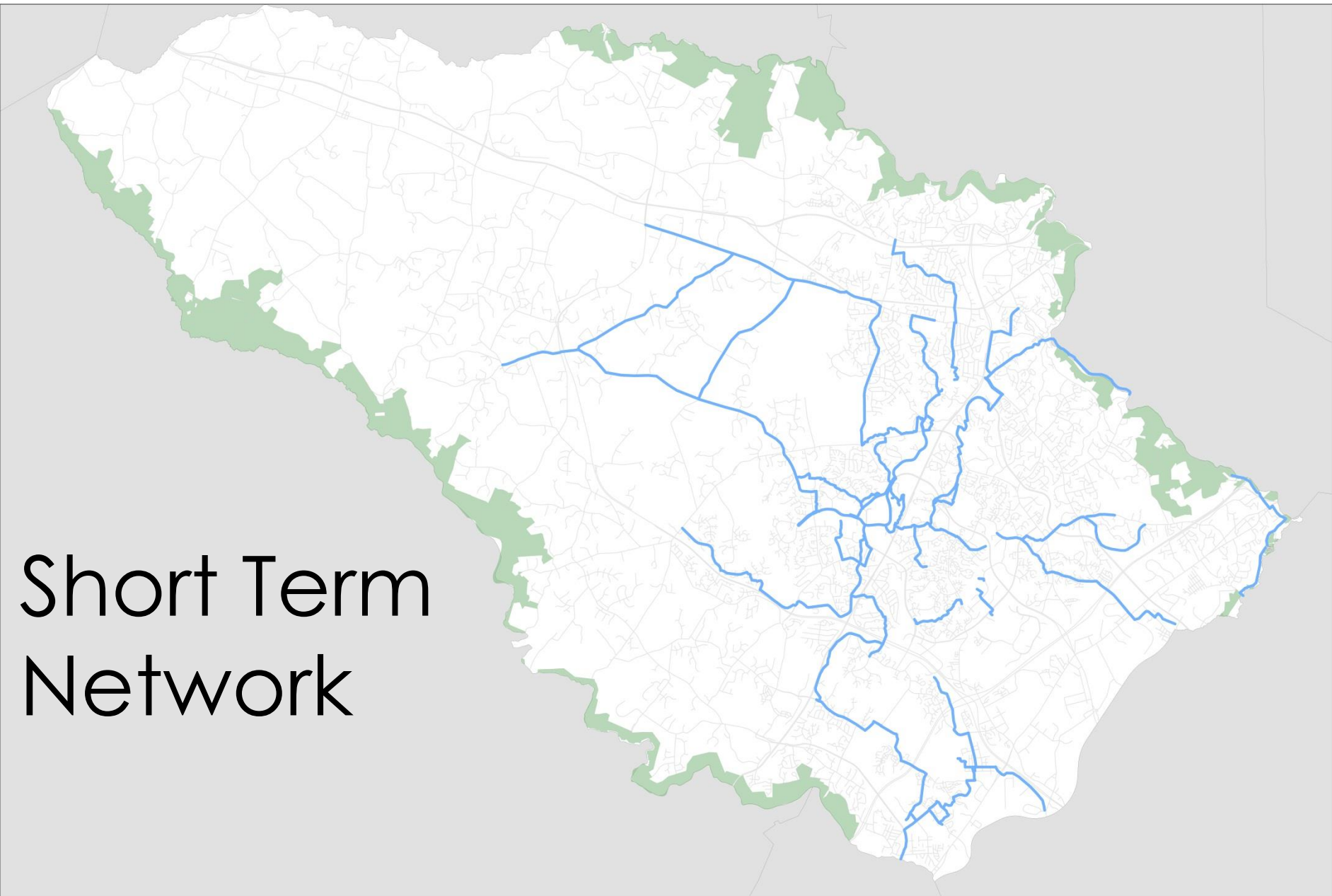
Protected Bike Lane, Austin TX



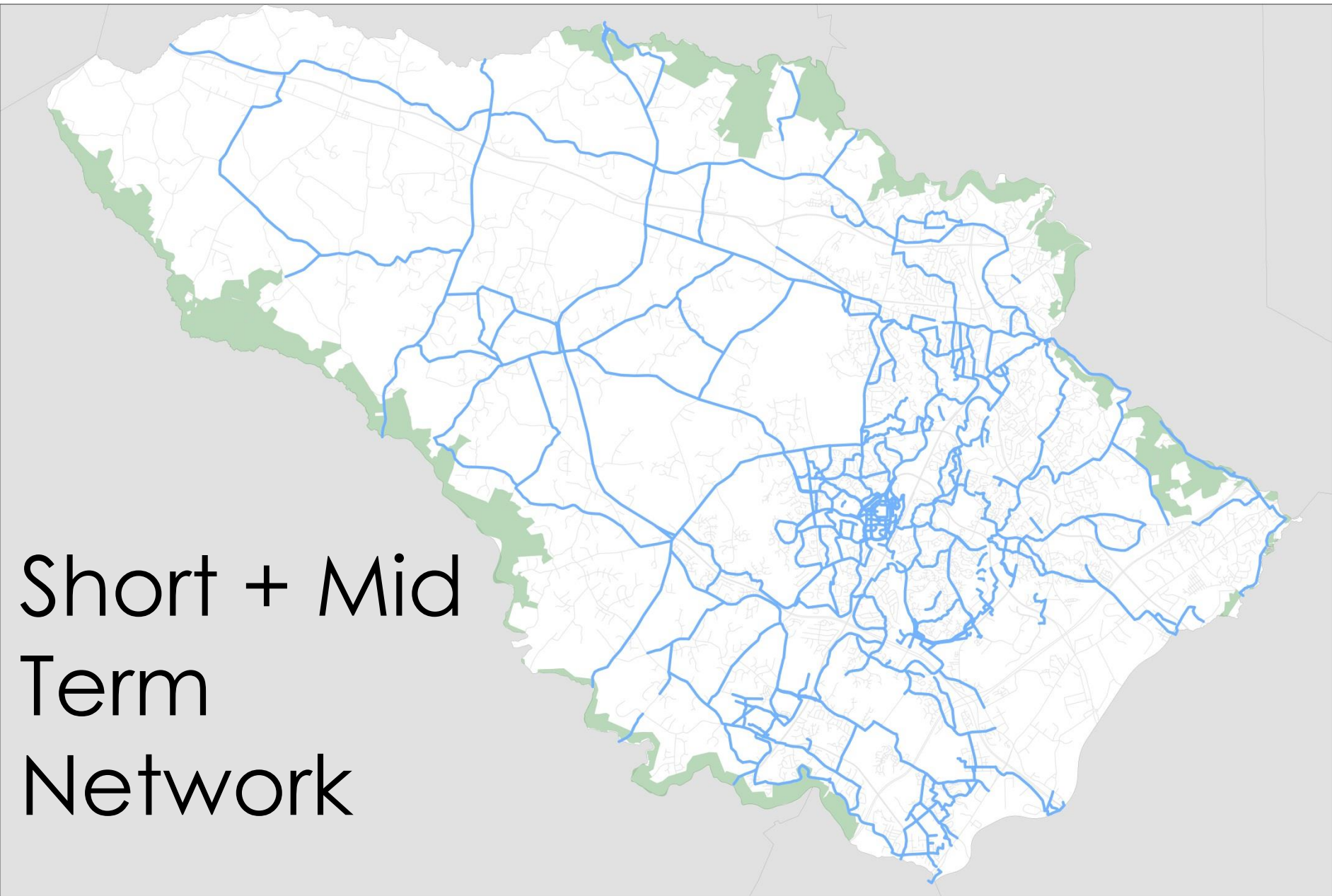
Cambridge, MA. (Source: City of Cambridge)



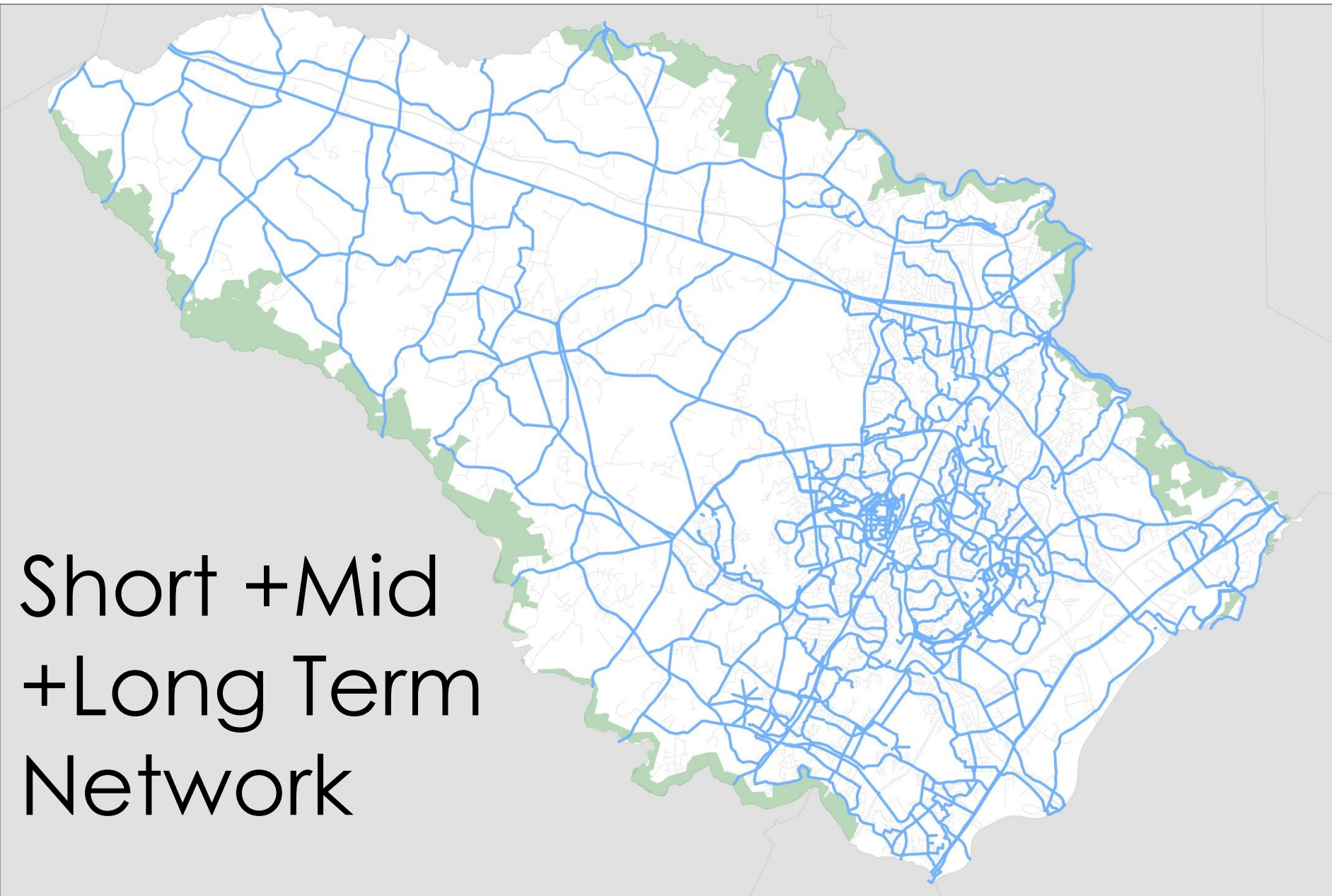
Off-street path, Columbia MD



Short Term  
Network



Short + Mid  
Term  
Network



Short +Mid  
+Long Term  
Network

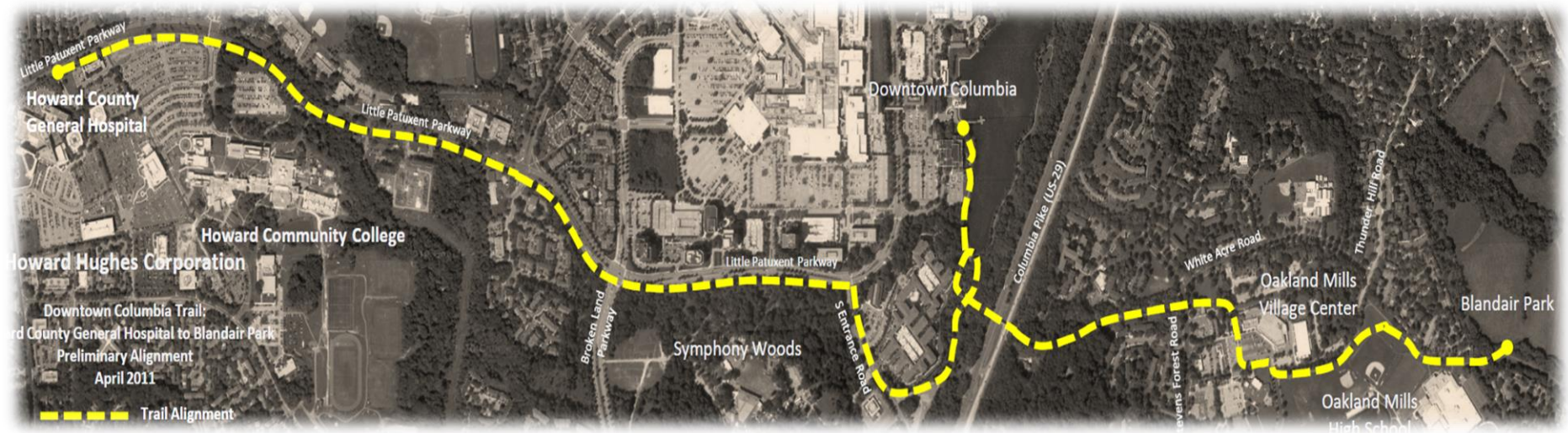


# DOWNTOWN COLUMBIA MULTI-USE PATH

Phase 1 complete

Phase 2 starting construction in Spring 2015

Phase 3 planned for 2015/2016.



County Library

Downtown Columbia Trail

Howard Community College 1.0

County Gen Hospital 1.6

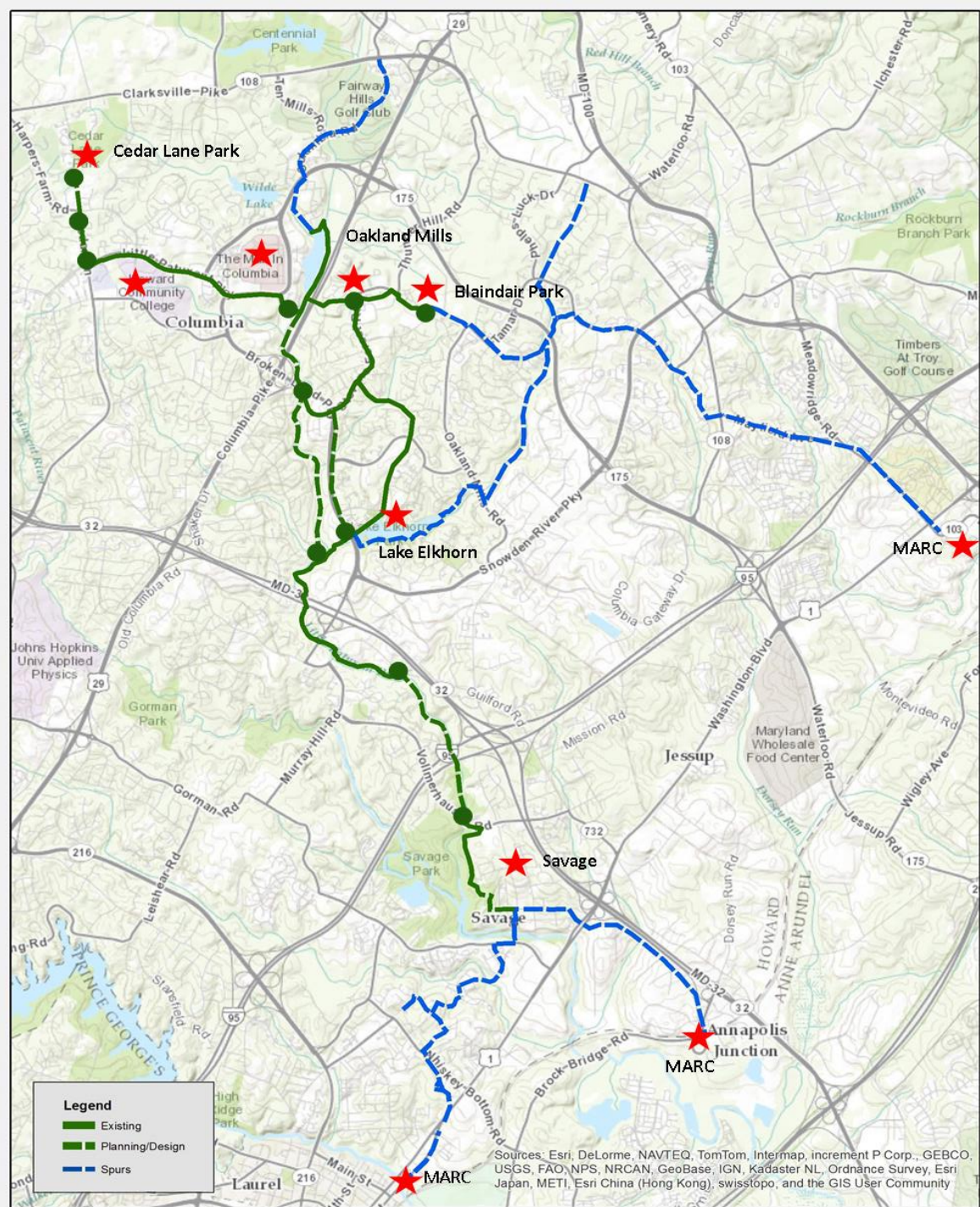


# GREEN T

High Quality, continuous pathway system.

Connecting people to places through active transportation.

Some sections are complete, some need improvement, some are planned.



# RECOMMENDATIONS FOR POLICY CHANGES

- Implement County Wide Complete Streets Policy
- Update Howard County Roadway Design Guidelines
- Update Developer Review Process

# RECOMMENDATIONS FOR PROGRAMS



- Encouragement
- Education
- Enforcement

# BIKEHOWARD SUMMARY



- When more people get around by bike, the whole community benefits.
- There is a demand for this and the benefits are substantial if we provide a safe, comfortable, easy to use network that accommodates people of all ages and abilities.



THE HOWARD COUNTY PEDESTRIAN MASTER PLAN

WALK HOWARD  
— *moving forward* —

# PEDESTRIAN MASTER PLAN STATUS

<b>Spring/Summer 2014</b>	<b>Fall 2014/Winter 2015</b>	<b>Winter/Spring 2015</b>	<b>Summer 2015</b>	<b>Fall 2015</b>	<b>Fall 2015</b>
<b>Assess bus stops &amp; pedestrian facilities along bus routes</b>	<b>Assess pedestrian facilities identified in 2007 Pedestrian Plan</b>	<b>Public engagement opportunities</b>	<b>Draft plan</b>	<b>Draft plan released</b>	<b>Final plan presented to county executive and council</b>
<b>Complete!</b>	<b>Complete!</b>	<b>Complete!</b>			



# WHY A GOOD PEDESTRIAN NETWORK?

- **Most people would rather drive less and walk more**
- **About 1/3 of resident's don't drive**
  - 100% under 16
  - 21% over 65
  - Many low income
  - Some people with disabilities
- **Improve safety**
  - 28% lower risk for pedestrians crossing a well-designed and operating intersection
  - 88% lower risk for pedestrians walking along sidewalks rather than in the roadway



# WHY A GOOD PEDESTRIAN NETWORK?

## Opportunity to convert short trips by car into walking trips

- 50% of trips are less than 3 miles
- 28% of trips are less than 1 mile
- 65% of trips under 1 mile are taken by car

## Supports transit

## Economic benefits

- Property values
- Less demand for roadway funds

## Physical well-being

## Environmental benefits

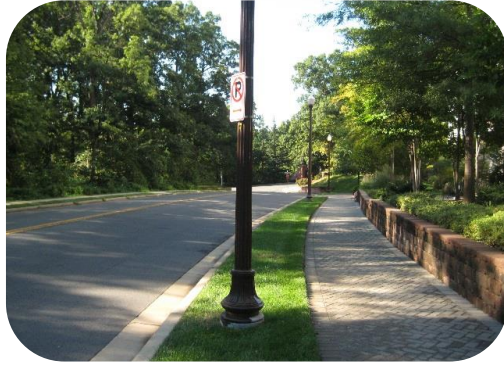


# WHY A PEDESTRIAN MASTER PLAN?

- **Provides a map to create a walkable community**
- **Relates to other planning**
- **Implemented over time as resources are available**



# TYPES OF PEDESTRIAN FACILITIES



Sidewalks



Curb ramps



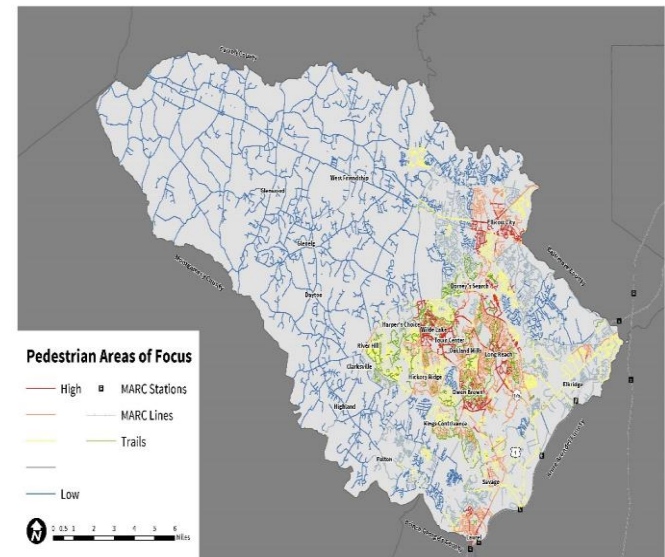
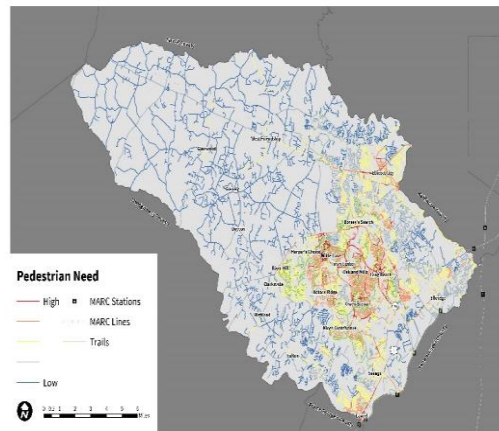
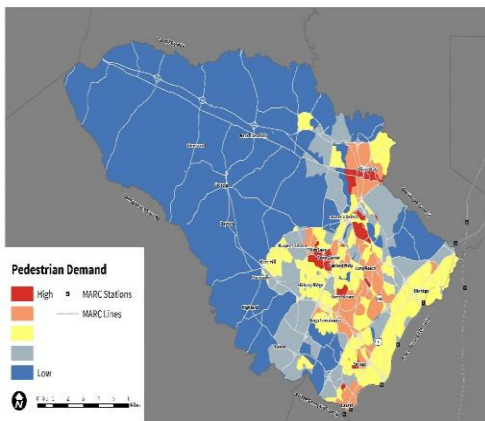
Crosswalks



Bus Stops

# PRELIMINARY PEDESTRIAN FOCUS AREAS

**Factor in where pedestrians are expected to walk (DEMAND) and condition of the network (NEED)**



Demand



Need

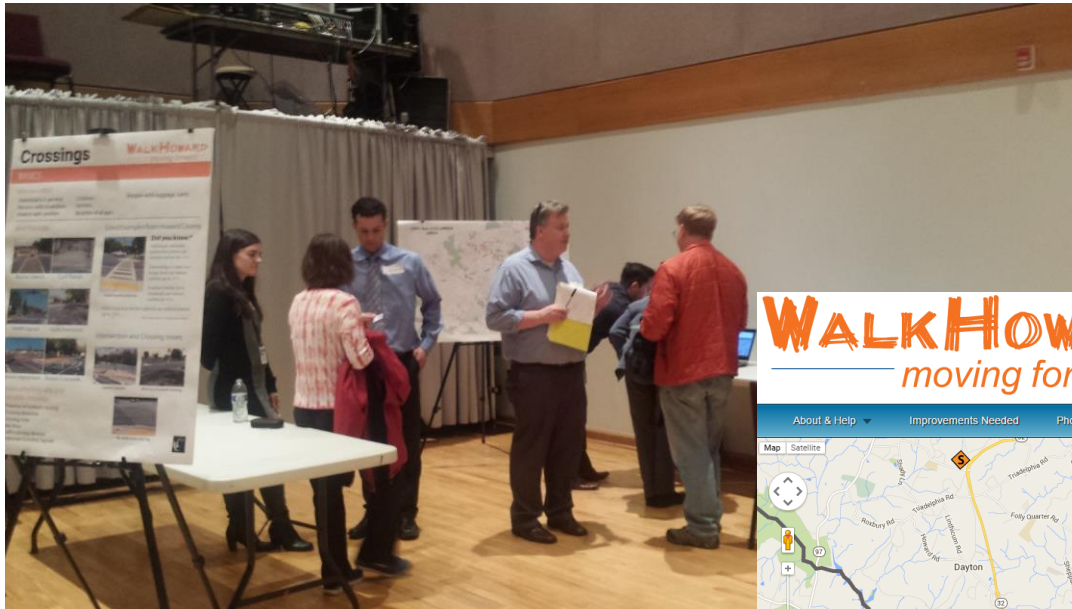


**Pedestrian  
Focus Areas**

# PUBLIC INPUT

**OPTION 1: On-line, WalkHoward.org, includes interactive map and forms.**

**OPTION 2: In person. Three Open House meetings in March and April.**

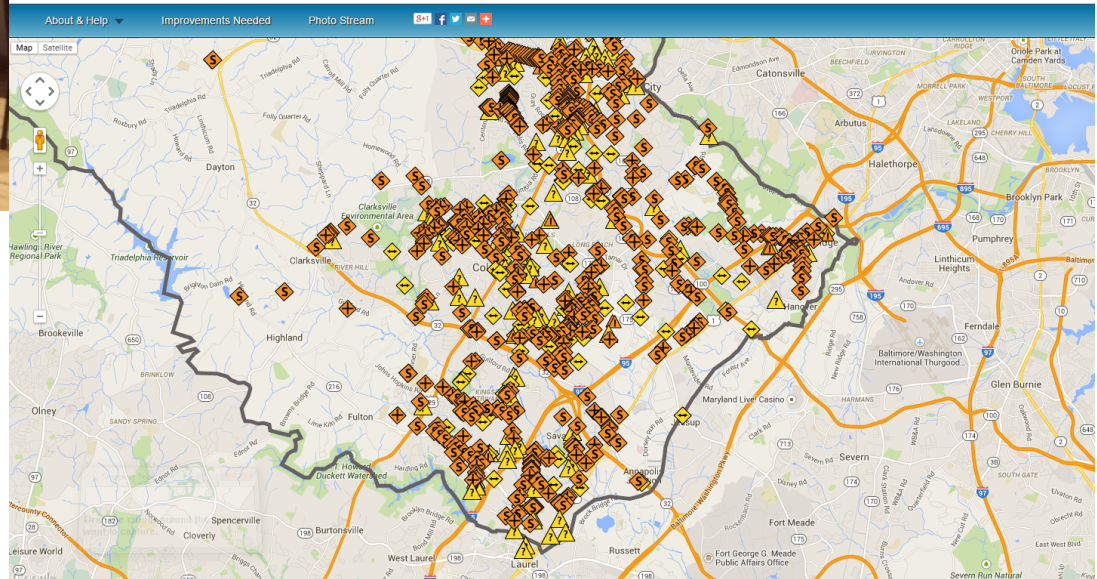


**WALKHOWARD**  
moving forward

- LEGEND**
- ◆ Missing Connections
  - ◆ Difficult Roadway Crossing
  - ▲ Pathway Obstruction
  - ◆ Sidewalk Needed
  - ▲ Other
  - Howard County Boundary

- 1 NOTE and DESCRIBE** your ideas by clicking "Spot Improvements Needed" in the menu bar below
- 2 CLICK** on a point to add photos
- 3 COMMENT** on others' input by clicking on their point

For detailed instructions, see "About & Help" below.



# NEXT STEPS FOR WALKHOWARD

- **Form Pedestrian Advisory Group**
- **Organize, categorize and prioritize improvements based on combination of public input and analytical assessment**
- **Provide recommendations for policy changes**
- **Draft Pedestrian Master Plan**



# WRAP-UP

## Website:

**BikeHoward.org**

**WalkHoward.org**

## Email:

[info@WalkHoward.org](mailto:info@WalkHoward.org)

## Telephone:

**410-313-3130**

